



INTERCONTINENTAL®

HAYMAN
GREAT BARRIER REEF



ACCOMMODATION COLLECTION



It's a personal honour to share InterContinental Hayman Great Barrier Reef's accommodation collection with you.

Positioned within the heart of Australia's Great Barrier Reef, InterContinental Hayman Great Barrier Reef is home to an immersive collection of 182 guest rooms, suites and villas. Four distinct wings – Pool, Lagoon, Pavilion and Beach – are artfully intertwined with spectacular swimming pools, panoramic seascapes, and tropical rainforest gardens, while four Hayman Residence's sit atop the island's prestigious hilltop.

As a Resort guest you will enjoy complimentary breakfast daily in the Pacific restaurant, complimentary Wi-Fi, exclusive use of the resort's state-of-the-art gym, tennis court, squash courts, leisure centre, iconic swimming pools and all non-motorised island water sport activities.

We hope to welcome you to InterContinental Hayman Great Barrier Reef in the near future.

Kind Regards,
Resort Team

TRANSFER OPTIONS



Launch Transfer

Price: AUD \$220.00 per adult per way / AUD \$110.00 per child per way (5-16 years old)

Inclusion: Sparkling wine and share plates

Departure Port: Hamilton Island

Length of trip: 60 minutes

Private Helicopters

Price: AUD \$1,000.00 each way for a R44 aircraft for up to two adults and one child or AUD \$2,000.00 each way for a R66 aircraft for up to four adults (weight and luggage restrictions apply)

Flight time: 15 minutes

*Starting from 1st April 2025, a R44 aircraft will be AUD \$1,040 each way and a R66 aircraft will be AUD \$2,080 each way

Private Yachts

Arrive to Hayman Island in ultimate style having enjoyed your own exclusive private yacht charter through the Whitsunday Islands. Each journey can be tailored to your group's individual needs. Available upon request and subject to availability.

To proceed with a reservation, please confirm your preferred room type and travel dates, and provide valid credit card to guarantee your booking. Should you require any further information or assistance, please do not hesitate to contact us directly.



THE BEACH WING

Positioned on the absolute beachfront, the exclusive Beach Wing is home to a coveted collection of eight Beachfront Pool Villas and the newly-built Three Bedroom Hayman Beach House. Meanwhile, 16 rainforest-inspired Retreat Courtyard Rooms sit a row behind featuring an immersive outdoor rain shower and private terrace.

BEACH WING



Retreat Courtyard Room

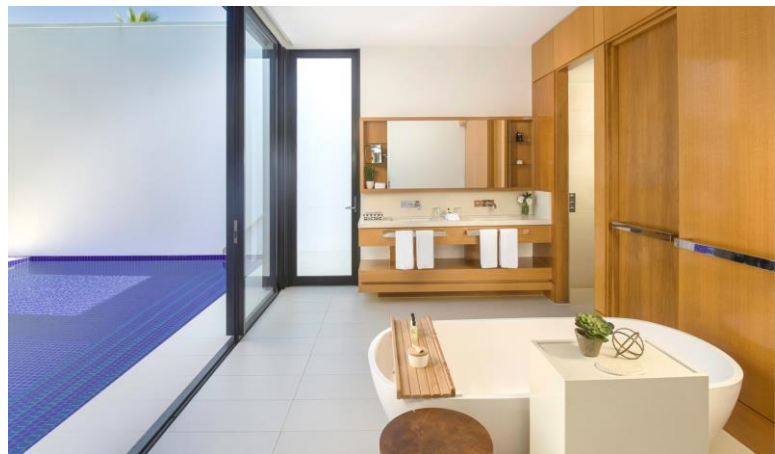
A haven of serene relaxation awaits with 16 stunning Retreat Courtyard Rooms. Located in the Beach Wing of the Resort, each room has been thoughtfully-designed to offer a rare sense of escapism, accentuating the natural surrounds with an immersive outdoor rain shower and private terrace. Luxury island living spills through the open-plan residence, with the light-filled living area, king bedding and master bathroom with separate shower and bathtub.

Room size: 38 sqm

Maximum occupancy: 3 persons (extra charges apply for third person, third person must be under 12 years old).

Full room category name: 1 King Classic Retreat Courtyard View

BEACH WING



Beachfront Pool Villa

Positioned on Hayman Island's white-crescent beachfront, eight exclusive Beachfront Pool Villas unlock immersive luxury in the heart of the Great Barrier Reef, offering open onto views of the Coral Sea.

Designed to accentuate beachside luxury, floor-to-ceiling windows create light-drenched living, with the residence offering a super-king bedroom, separate bathroom with island bathtub, separate shower and open-plan dressing room. Outdoors, the masterfully-designed villas feature open-air plunge pool, outdoor shower, chaise lounge, beautiful timber finishes, and direct beach access.

Villa size: 120 sqm

Maximum occupancy: 2 adults

Full room category name: 1 King Beachfront Pool Villa

BEACH WING



Three Bedroom Hayman Beach House

Experience immersive private island living with the exclusive Three Bedroom Hayman Beach House. Newly built in 2019, InterContinental Hayman Great Barrier Reef's iconic beachfront abode holds prime position on the private island's white-crescent beachfront while maintaining close access to the resort's iconic Hayman Pool.

The Beach House's expansive modern interiors are home to an 8-person dining room, generous living area, and an alfresco entertaining deck complete with a spectacular beachfront Infinity Pool. Three bedrooms offer a distinct sense of place with floor-to-ceiling vistas across The Whitsunday Islands. The Master Suite comes complete with an opulent ocean-facing king bed, large ensuite and direct access to the Infinity Pool. While the Beach House's additional two bedrooms – one king and one twin – feature an ensuite, living area and private plunge pool.

Designed to flow effortlessly from the indoors to outdoors, this immaculate Beach House also features sun lounges with each pool, manicured gardens, bamboo walls, and timber stepping platforms leading to direct beach access. Please note that all pools in the Three Bedroom Hayman Beach House are fully safety-fenced which permits children under the age of 12 to stay in this accommodation.

Villa size: 400 sqm

Maximum occupancy: 6 persons

Full room category name: 3 Bedroom Hayman Beach House







THE LAGOON WING

Located on the tranquil eastern side of InterContinental Hayman Great Barrier Reef, The Lagoon Wing features a premium collection of one-, two- and three-bedroom Hayman Suites, alongside 95 guest rooms with interconnecting and accessible options available. The Lagoon Wing overlooks the resort's iconic Infinity Pool, while higher floors harbour breathtaking views across the Coral Sea.

LAGOON WING



Lagoon King Room and Lagoon Twin Room

Overlooking Hayman Island's lily lagoon and tropical gardens, the Lagoon Rooms – available in king or twin configuration – offer opulent relaxation on the eastern side of the resort. Spread across three levels within The Lagoon Wing, the Lagoon Rooms are designed as a retreat complete with soft finishes and luxury amenities. Positioned beside Infinity Pool and Bam Bam, the Lagoon Room's offer opulent bedding, a separate dressing room, private balcony and a contemporary ensuite complete with a double vanity,= shower and separate bathtubs.

Room views vary according to room category and location. Disability accessible rooms are available on request. Adjoining rooms are subject to availability upon request. If required, a third guest is to utilise a pull-out single sofa bed.

Room size: 54 sqm

Maximum occupancy: 3 persons (extra charges apply for third person, third person must be under 12 years old)

Full room category names: 1 King Classic | 1 King Premium Lagoon View | 2 Single Premium Lagoon View | 1 King Premium Beach Access

LAGOON WING



Lagoon Ocean View King Room and Lagoon Ocean View Twin Room

The Lagoon Ocean View Rooms – available in king or twin configurations – face out onto sweeping views across The Whitsunday Islands and feature a private balcony and ensuite. Spread across three floors within The Lagoon Wing, each Lagoon Ocean View Room welcomes guests with opulent interiors, king or twin bedding and an open-plan dressing room. A private ensuite features a separate bathtub, shower, luxury amenities and double vanity. The Lagoon Ocean View Room leads out onto a private balcony unlocking views that span across Hayman Island, Hook Island and Langford Island.

Please note that adjoining rooms are subject to availability upon request. If required, a third guest is to utilise a pull-out single sofa bed.

Room size: 54 sqm

Maximum occupancy: 3 persons (extra charges apply for third person, third person must be under 12 years old)

Full room category names: 1 King Premium Lagoon Ocean View | 2 Single Premium Lagoon Ocean View

LAGOON WING



Lagoon King Suite

Located within The Lagoon Wing, the one-bedroom Lagoon King Suites blend indoor and outdoor with a private double balcony overlooking Hayman Island's lily lagoon and Infinity Pool. The Lagoon King Suite's contemporary interiors offer a spacious retreat with a large separate lounge area, 4-person dining area and a separate master bedroom. The master bedroom is complete with a king-sized bed, dedicated workspace and a private dressing room. While an open-plan bathroom features a separate shower, double vanity and a freestanding bathtub.

Please note that adjoining rooms are available upon request and are subject to availability.

Suite size: 90 sqm

Maximum occupancy: 3 persons (extra charges apply for third person)

Full room category name: 1 King 1 Bedroom Suite Lagoon View

Family Lagoon Suite

Located on the tranquil eastern side of the resort, The Family Lagoon Suite features an interconnecting king and twin guest room with close access to the family-friendly Infinity Pool.

Comprising of a king suite and twin bedroom, the two rooms connect privately through a shared foyer, each with a private balcony presenting views across the lily lagoon and gardens, or Hayman Beach and The Coral Sea. Alongside floor-to-ceiling-windows and opulent décor, each guest room features its own ensuite with separate shower, bathtub, open-plan dressing room and double vanity.

Please note that The Family Lagoon Suite is available upon request.

Suite size: 144 sqm

Maximum occupancy: 4 adults + 2 children up to 12 years of age to use a pull-out sofa bed in each room.

Full room category name: 1 King 2 Single Family Lagoon Suite

LAGOON WING



One Bedroom Hayman Suite

The Lagoon Wing's One Bedroom Hayman Suite is positioned on the top floor of the Lagoon Wing, unlocking unobstructed views across Hayman Island from a show-stopping private double balcony. The One Bedroom Hayman Suite presents light-filled contemporary spaces with a large open-plan living room, dining area and large balcony running the length of the ocean-facing suite. The separate king bedroom offers a serene retreat with a four-poster canopied king bed facing out onto sea views, a contemporary ensuite bathroom, separate shower, bathtub, double vanities, a private dressing room and luxury amenities.

Suite size: 92 sqm

Maximum occupancy: 3 persons (extra charges apply for third person, third person to utilise a rollaway bed and be under 12 years old).

Full room category name: 1 Bedroom Hayman Suite

LAGOON WING



Two Bedroom Hayman Suite

The Lagoon Wing's Two Bedroom Hayman Suite offers an ocean-facing retreat with beautifully appointed interiors and two generous guest rooms.

Ideal for families, the suite presents a large open-plan living room and dining area, both of which flow seamlessly onto a large private balcony with sweeping views of Hayman Beach, The Coral Sea and The Whitsunday Islands. The light-filled suites offer two separate bedrooms – one king and one twin – each present spectacular double-doors opening onto the suite's wrap-around balcony, a modern ensuite, and postcard views across the region.

Suite size: 160 sqm

Maximum occupancy: 5 persons. The fifth guest to utilise a rollaway bed (additional charges apply, must be under 12 years old).

Full room category name: 2 Bedroom Hayman Suite

LAGOON WING



Three Bedroom Hayman Suite

The Lagoon Wing's Three Bedroom Hayman Suite is ideal for larger travel groups, with panoramic views across Hayman Island and The Whitsunday Islands from a large wrap-around balcony, an impressive gallery kitchenette, contemporary open-plan living area and bar.

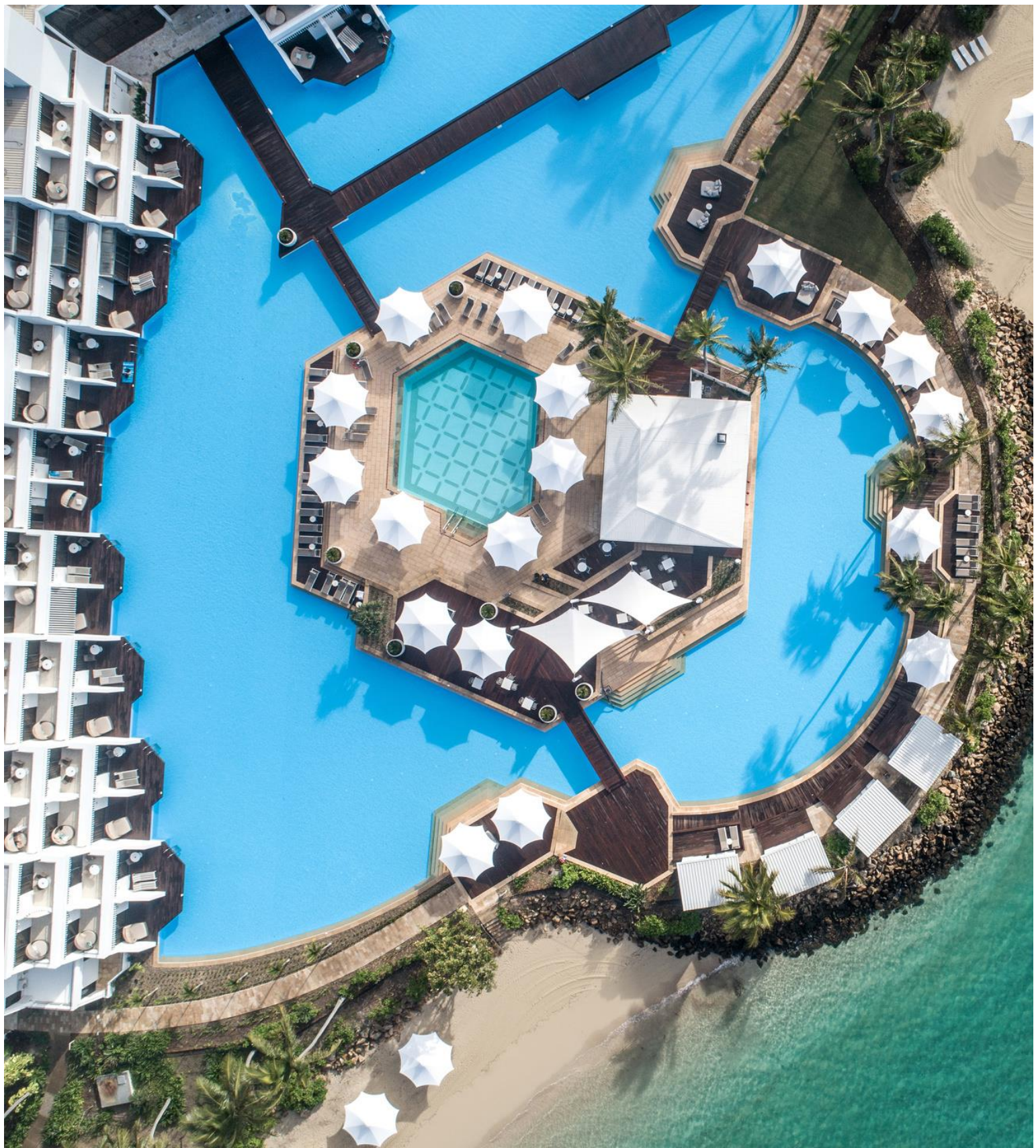
As the resort's second-largest suite, guests will welcome entertainment excellence with a presidential-size lounge and dining area, fully-equipped kitchenette and a dedicated bar area. The spacious suite's wrap around balcony offers a deep connection to island surrounds with views across Hayman Beach, Hook Island and Langford Island.

Three spacious bedrooms feature an opulent king bed in two rooms and a twin bed configuration in the third room. Each bedroom has an ensuite, with the master suite boasting a private ocean-facing bathroom with separate shower, bathtub, double vanity and open-plan dressing room.

Suite size: 190 sqm

Maximum occupancy: 7 persons (maximum of adults and 2 children under 12 years old, fifth adult to utilise a rollaway bed.)

Full room category name: 3 Bedroom Hayman Suite



THE POOL WING

The Pool Wing presents 46 spectacular one-and-two-bedroom suites perched over Hayman® Pool. While each suite is complete with captivating vistas across the Coral Sea from individual private balconies, an immersive collection of One Bedroom Direct Pool Access Suites sees guests swim-out into Hayman® Pool via their private double balcony.

POOL WING



One Bedroom Pool Access Suite

InterContinental Hayman Great Barrier Reef's collection of iconic One Bedroom Pool Access Suites offer swim-out access to Hayman Pool from the suite's private double balcony. Perched over Australia's largest swimming pool – Hayman Pool – the One Bedroom Pool Access Suites present the height of luxury resort living. Each private double balcony is complete with a relaxing day bed, dining area and swim-out access to the swimming pool. While open-plan interiors boast floor-to-ceiling windows, a soft coastal hued lounge area, dedicated 4-person dining area and state-of-the-art suite control.

The master bedroom features king bedding, an open-plan dressing room and contemporary ensuite with separate shower, bathtub and luxury amenities.

Please note that due to Queensland's pool safety regulations, this is an adults-only room type for a maximum of two adults.

Suite size: 75 sqm

Maximum occupancy: 2 persons

Full room category name: 1 King 1 Bedroom Suite Pool Access

POOL WING



One Bedroom Pool Ocean View Suite

Perched over Hayman Pool with captivating views across The Whitsunday Islands, the contemporary One Bedroom Ocean View Pool Suite offers a private balcony and open-plan living areas.

Located across level 2 and 3 of The Pool Wing, the One Bedroom Ocean View Pool Suites offer an elegant blend of interior and exterior design with views across Australia's largest swimming pool – Hayman Pool – and The Coral Sea from a large private double balcony. Features include a contemporary living room and 4-person dining area, complete with beautiful finishes and minimalist design. The master guest room is complete with a four-poster king size canopied bed and an open-plan bathroom with a separate shower, freestanding bath, double vanity and open-plan dressing room.

Disability accessible rooms are available on request.

Suite size: 75 sqm

Maximum occupancy: 2 persons

Full room category names: 1 King 1 Bedroom Suite Pool View | 1 King 1 Bedroom Suite Accessible

POOL WING



Two Bedroom Pool Ocean View Suite

Located across level 2 and 3 of The Pool Wing, just over Australia's largest swimming pool, the beautifully appointed Two Bedroom Ocean View Pool Suite offers a private island sanctuary for families or groups.

The Two Bedroom Ocean View Pool Suites offer an elegant blend of interior and exterior design with views across the Hayman Pool and The Coral Sea from a large private double balcony. Features include a contemporary living room and 4-person dining area, complete with beautiful finishes and minimalist design.

Spread across 114 sqm, the suite also includes two guest rooms. The master guest room is complete with a four-poster king size canopied bed and an open-plan bathroom with a separate shower, freestanding bath, double vanity and open-plan dressing room. The second guest room is set-up with twin configuration and features an open-plan dressing room and ensuite with shower and luxury amenities.

Suite size: 114 sqm (Pool Suite is 75 sqm and twin room at 38 sqm)

Maximum occupancy: 4 persons

Full room category name: 2 Bedroom Pool Ocean View Suite



THE PAVILIONS WING

Set on the secluded northern beach frontage of Hayman Bay, are twelve beachfront pavilions with absolute ocean views. Designed for exclusivity and privacy, this secluded area of the Resort is ideal for couples or honeymooners looking for an adults only experience whilst having access to the Resort's full facilities just a short walk or buggy ride away.

BEACHFRONT PAVILION



Beachfront Pavilion

Offering direct beach access, the Beachfront Pavilions provide the ultimate escape for sea-side relaxation in a serene pristine environment. Each pavilion is set within landscaped hedges for privacy and offers a grassed lawn with deck chairs to take in the ocean views. The beachfront pavilion is a standalone bungalow with open plan light filled living area, super king bedding, master bathroom with freestanding bath, connected deck terrace and private plunge pool.

Room size: 58 sqm

Maximum occupancy: 2 persons, an age limit of 16 years and over applies

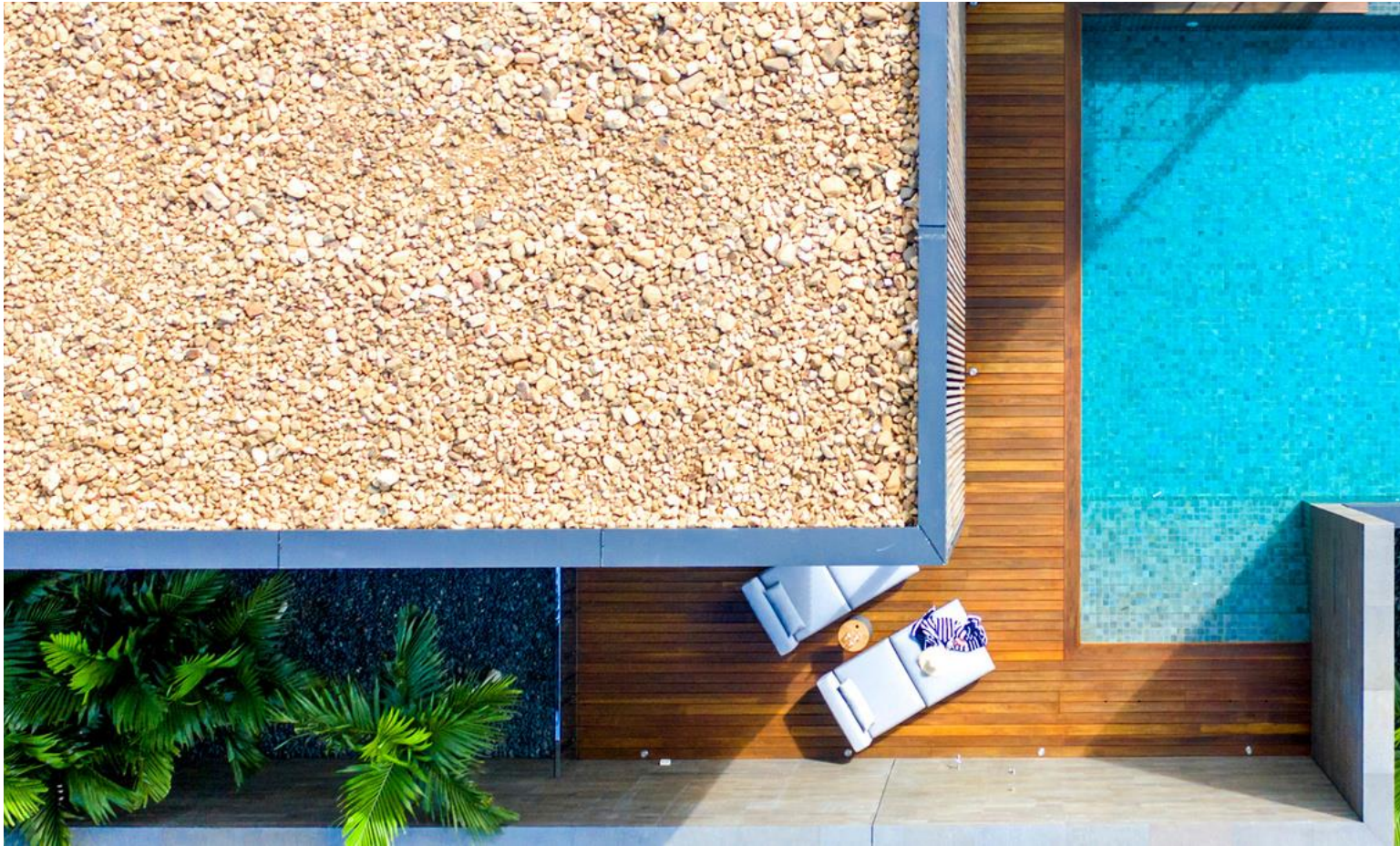




HAYMAN RESIDENCES

Designed by multi-award-winning Australian Architect Kerry Hill, four private four-bedroom Hayman Residences are positioned on Hayman Island's prestigious hilltop boasting panoramic views across The Whitsundays.

HAYMAN RESIDENCES



Hayman Residences

Designed by multi-award-winning Australian Architect Kerry Hill, four private Hayman Residences are positioned on Hayman Island's prestigious hilltop boasting panoramic views across The Whitsundays.

Each hilltop retreat presents four guest rooms each with their own private ensuite, and breathtaking open plan living areas complete with a contemporary lounge, fully-equipped kitchen, wrap-around balcony, barbeque area, and best of all – a show-stopping Infinity Pool with cascading views across Australia's most iconic private island, Hayman Island.

While staying in a Hayman Residence, enjoy full access to InterContinental Hayman Island Resort's facilities including the resort's 24-hour gym, spa, swimming pools, restaurants and bars.

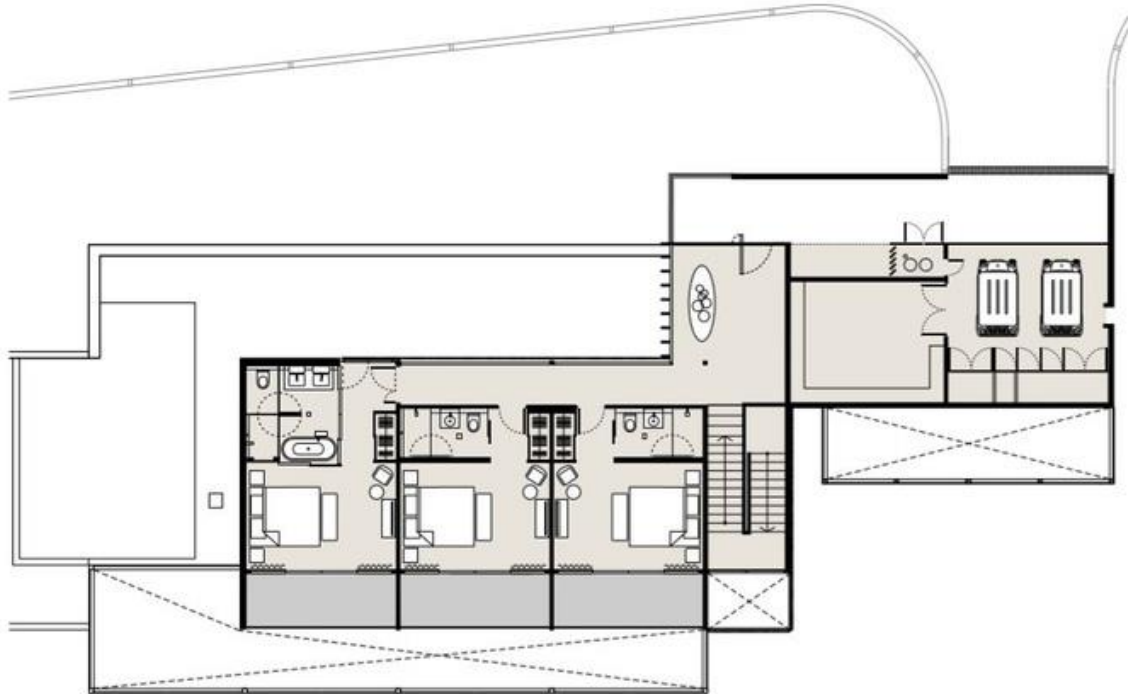
Suite size: (Lower Floor) 412 sqm (Upper Floor) 237 sqm

Maximum occupancy: 8 persons

Full room category name: 4 Bedroom Hayman Residence

HAYMAN RESIDENCES

HAYMAN RESIDENCE UPPER FLOOR



HAYMAN RESIDENCE LOWER FLOOR







INTERCONTINENTAL®
HAYMAN
GREAT BARRIER REEF

Travel is temporary, yet
the journey is forever.