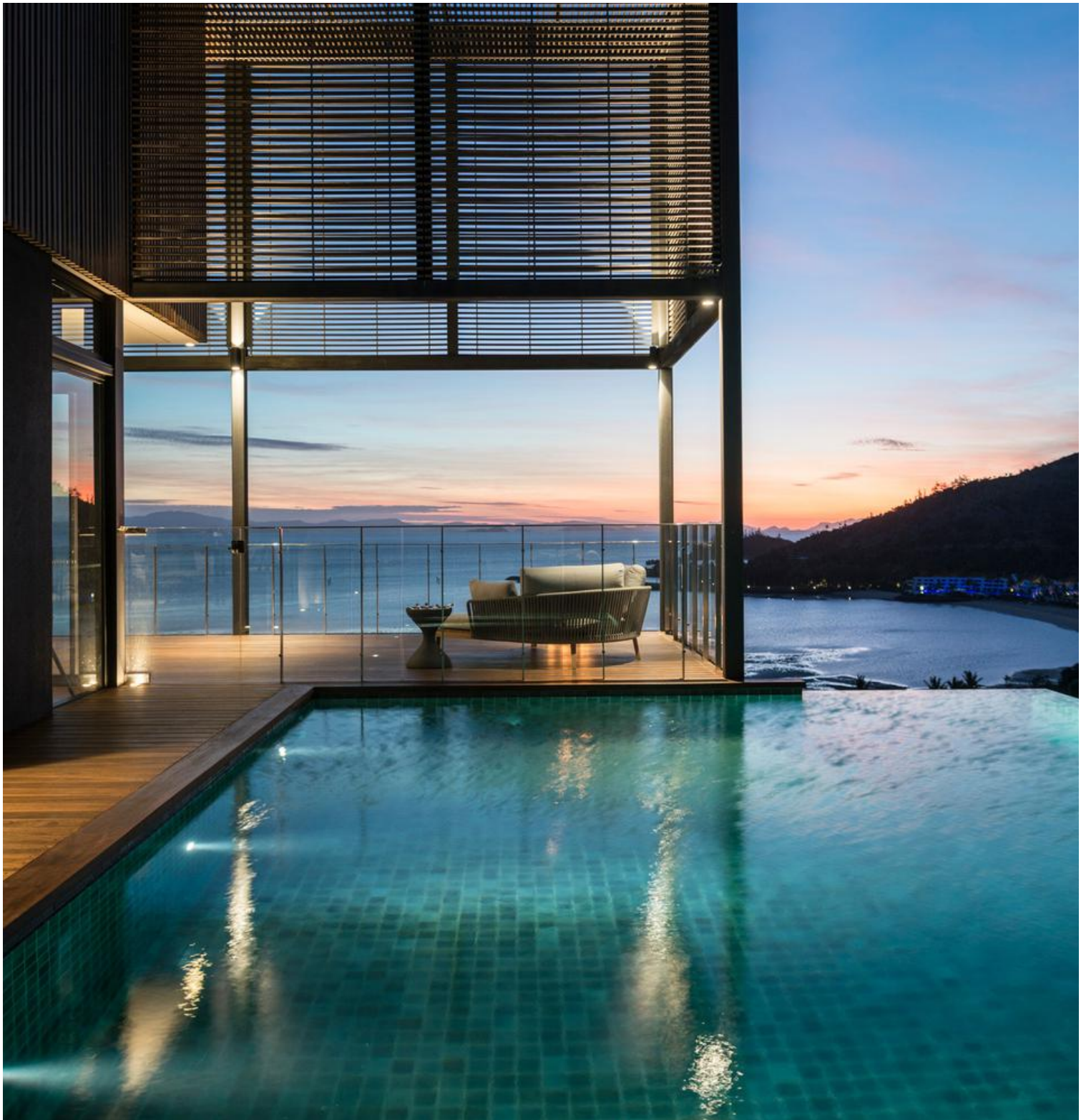


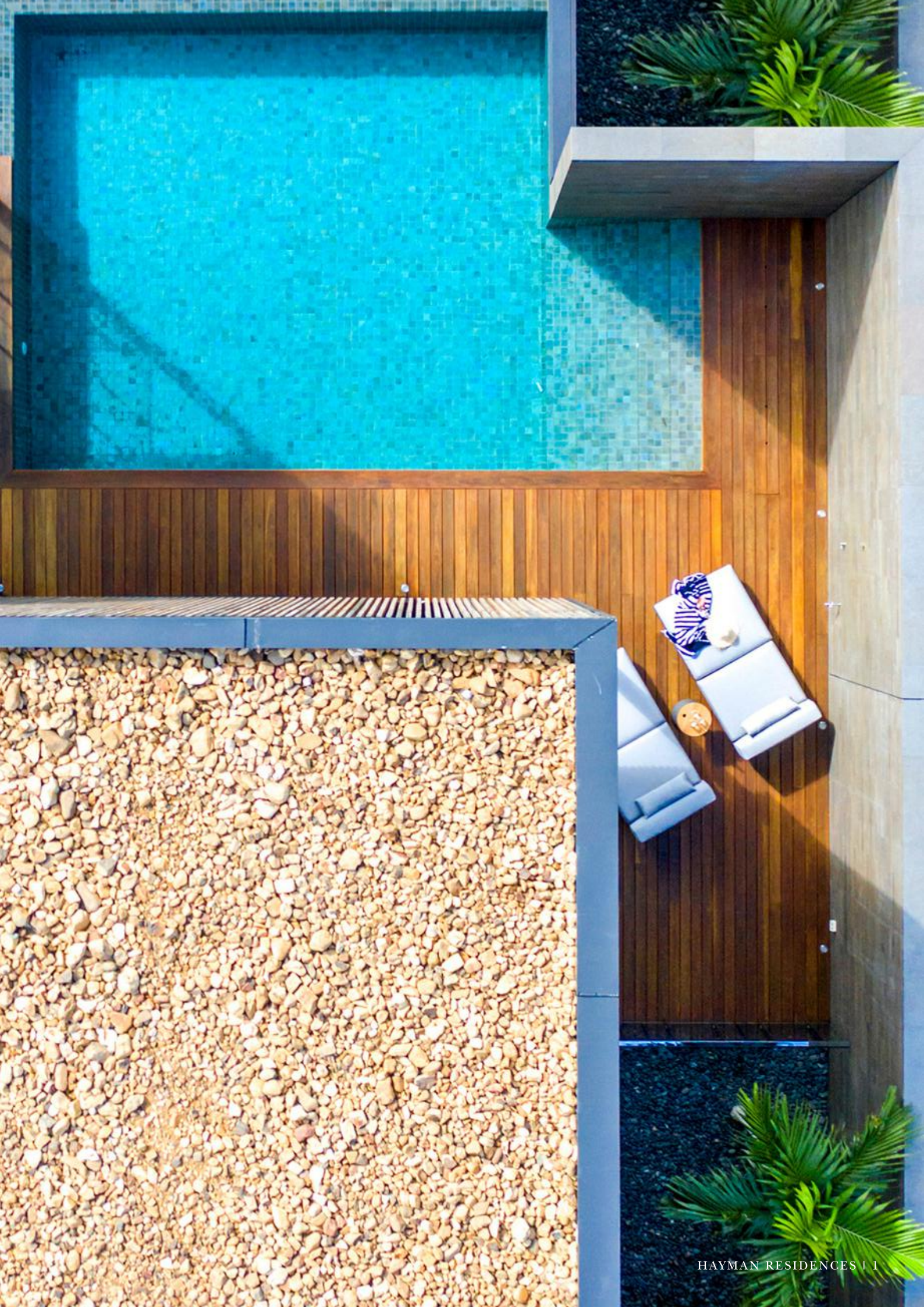


INTERCONTINENTAL®
HAYMAN ISLAND RESORT



HAYMAN RESIDENCES

4 GUEST ROOMS | 8 GUESTS





TRAVEL DEEPER INTO IMMERSIVE LUXURY WITH A LUXURY STAY IN ONE OF TWO HAYMAN RESIDENCES.

Sitting regally on Hayman Island's iconic hillside, two double-storey residences unlock the epitome of luxury entertaining in the Whitsunday Islands with uninterrupted panoramic views past Langford and Hook Island, and out to the Coral Sea. Built in 2017, Hayman Residences were designed by the late multi-award-winning Australian Architect Kerry Hill and present four guest rooms each with their own private ensuites, entertainment facilities second to none and contemporary furnishings sourced from DBI and Daarc.

Both Residences boast a stunning open-plan ground floor complete with a spacious contemporary-style lounge, dining table, bar and fully-equipped kitchen leading out to a show stopping wrap-around balcony that looks onto InterContinental Hayman Island Resort. Both Residences feature a stunning Infinity Pool, outdoor furniture and a barbeque ideal for private dining experiences.

Hayman Residences are priced from \$6,000 AUD per night and are available for short term and long term stays. For more information, or to book, please contact InterContinental Hayman Island Resort's reservations team via hayman.reservations@ihg.com or +61 7 5501 9992.

FEATURES AT A GLANCE

Room Type: Hayman Residence

No. Of Guest Rooms: 4

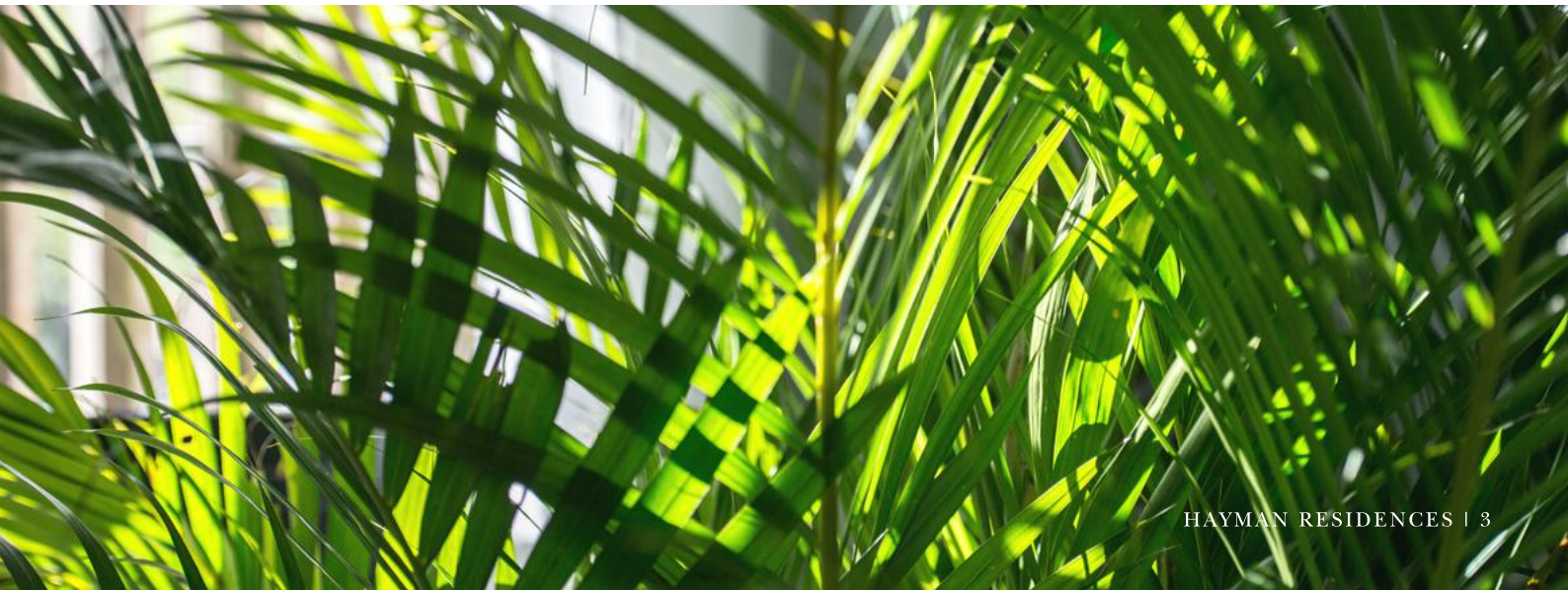
Property Size: 650sqm

Location: Hayman Island, The Whitsunday Region

View: Langford Island, Hayman Island, Hook Island, The Coral Sea

Amenities:

- Premium fixtures and fittings, natural solid timber floors and stone finishes
- Open plan living and dining spaces flow to expansive outdoor terraces with integrated BBQ island
- Heat regulated Infinity Pool
- Breakfast bar seating four, dining room table seating eight and outdoor table seating eight
- Fully-stocked mini bar and fridge available on request for an additional fee
- Tea and coffee making facilities
- Lounge room with plasma TV and telescope
- Four ensuite guest rooms with private balconies
- Powder room
- Fully-equipped kitchen
- Ducted air conditioning and integrated home automation
- Cyclone grade floor-to-ceiling glass throughout
- Lock-up garage houses two golf buggies inclusive with residence
- Laundry and spacious storage room
- My Concierge team member to assist with island reservations including dining and activities
- Complimentary wi-fi
- Hairdryer, iron and ironing board
- In-room safe
- In-room iPad with Google Chromecast available
- Private chef experiences available on request
- Full access to InterContinental Hayman Island Resort's features and facilities including 24-hour gym, spa, restaurants, bar, swimming pools and more
- Dedicated Hayman Residence Buggy Parking spaces within the resort



HAYMAN RESIDENCE FLOORPLAN

UPPER LEVEL



LOWER LEVEL





Open-Plan Living Area

Explore a spectacular open-plan Lower Level flooded with natural light and fitted with a spacious contemporary-style lounge, dining table with seating for eight, bar and fully-equipped kitchen complete with a pantry, stove top and oven, French door fridge and freezer, an integrated wine fridge, dishwasher and microwave, and a dedicated laundry room with washing machine and dryer.

Open-plan interiors lead out to a breathtaking wrap-around balcony featuring panoramic views across The Whitsunday Islands while Suite Control assimilates with guest's temperature and lighting preferences to ensure an ambient atmosphere.







Wrap-Around Outdoor Terrace and Infinity Pool

Designed to evoke a quintessentially Australian feel, Hayman Residence's stunning balcony is accented by an island barbeque, available for private chef experiences, and a tranquil Infinity Pool. Undercover outdoor terraces wrap-around the Residence's Lower Level, with alfresco lounges, plush deck chairs and a grand table set for eight setting the scene for endless entertainment opportunities.

This private balcony envelopes guests in panoramic views across The Coral Sea; immerse in The Whitsundays' iconic blue hues by day before relaxing under a star-filled sky during the evening time.

**SET THE SCENE FOR PRIVATE ISLAND
ENTERTAINMENT IN THE WHITSUNDAYS.**



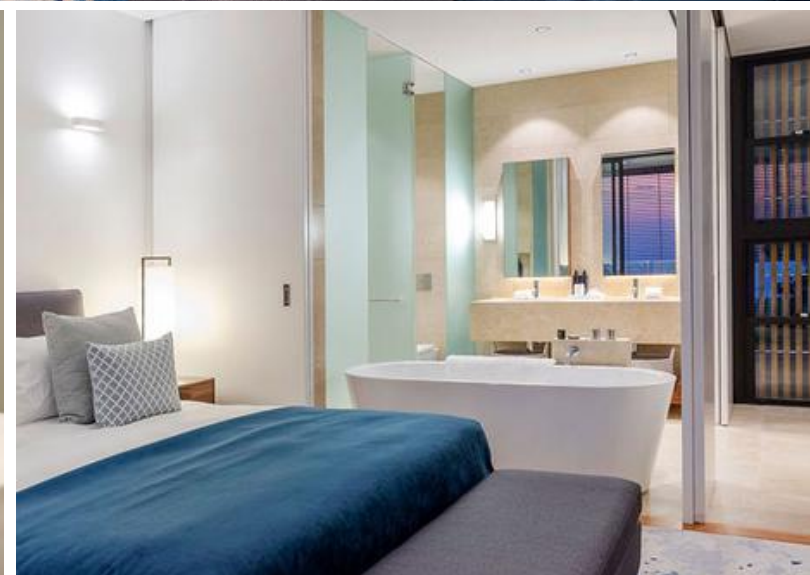
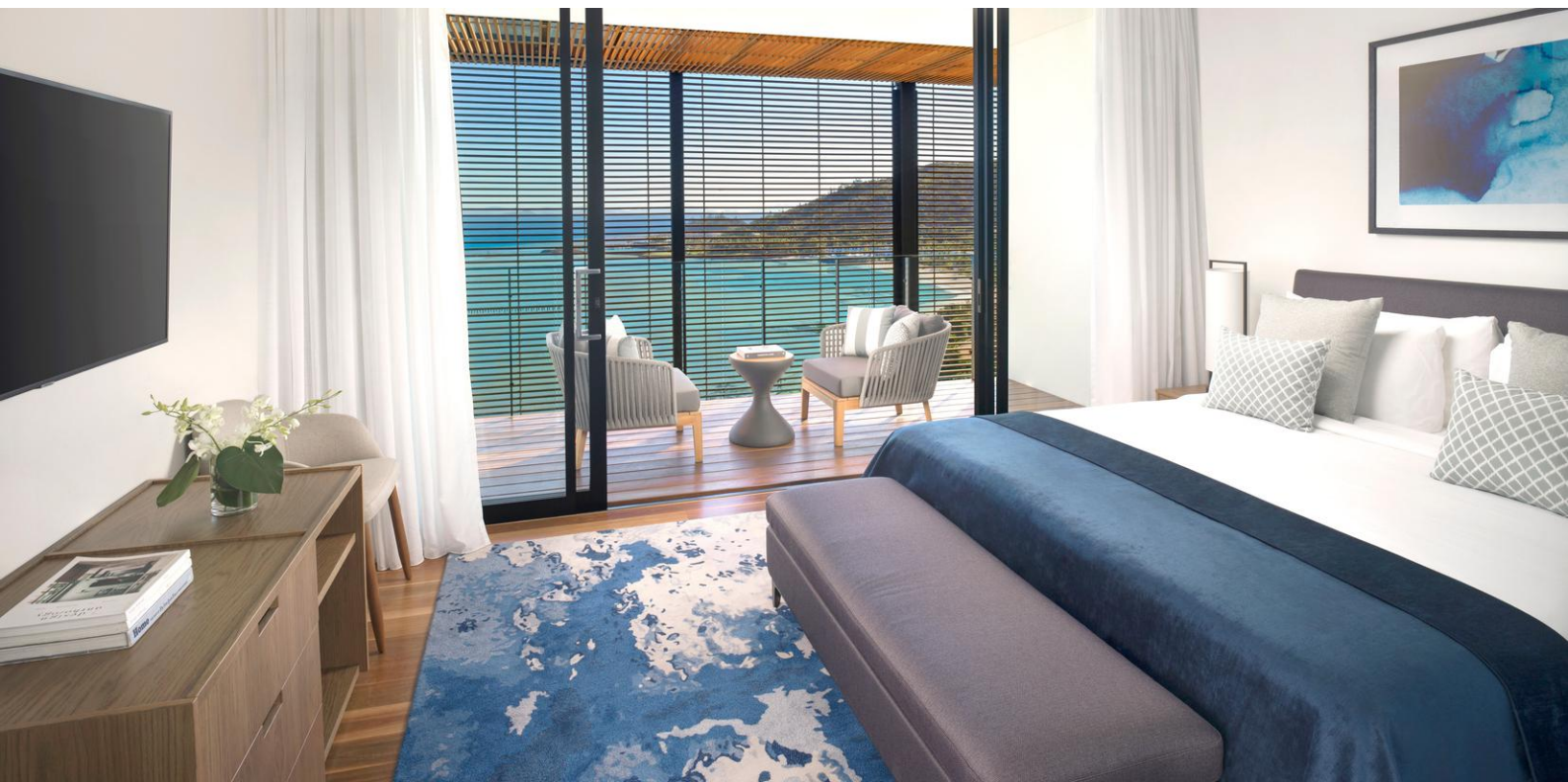
The Master Suite

Positioned on the Lower Level, the Master Suite exemplifies luxury private island living with sweeping views across The Coral Sea, a stunning natural stone ensuite complete with deep-soak bath and separate rain shower, a walk-in wardrobe, luxury furniture and a bamboo balcony running the length of the suite.

Designed to redefine opulence, the Master Suite boasts a state-of-the-art plasma television, ducted air-conditioning, an in-room iPad with Google Chromecast and Apple TV, and a tranquil outdoor sitting area.







Three Upper Level Guest Rooms

The Residence's Upper Level presents three of the residence's four beautifully-appointed guest rooms, each complete with a modern ensuite, built-in wardrobe, LED TV, ducted air-conditioning and a private balcony that boasts expansive views across the Coral Sea. While the two guest rooms closest to the entry are identical in layout, the third guest room, located at the end of the Upper Level's hallway, is fitted with a double vanity bathroom and luxurious deep-soaking bathtub.

WAKE UP TO THE WONDERS OF THE
GREAT BARRIER REEF EVERY MORNING.





INTERCONTINENTAL®
HAYMAN ISLAND RESORT

Travel is temporary, yet
the journey is forever.